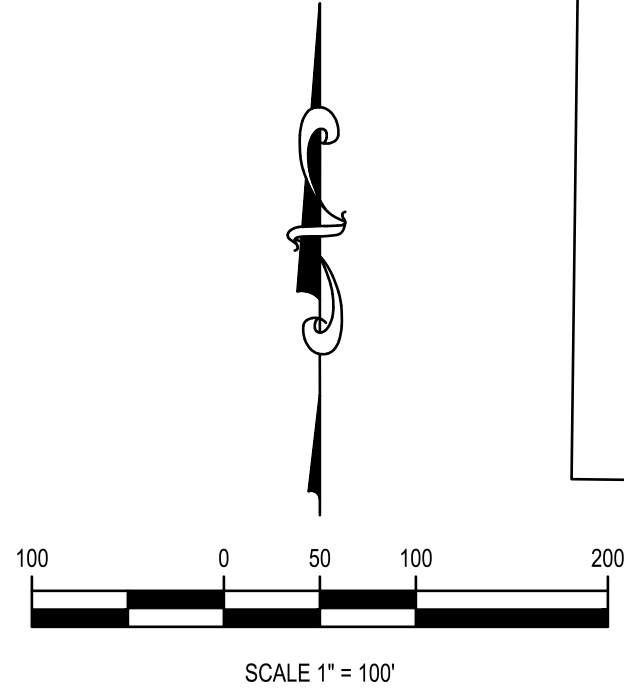
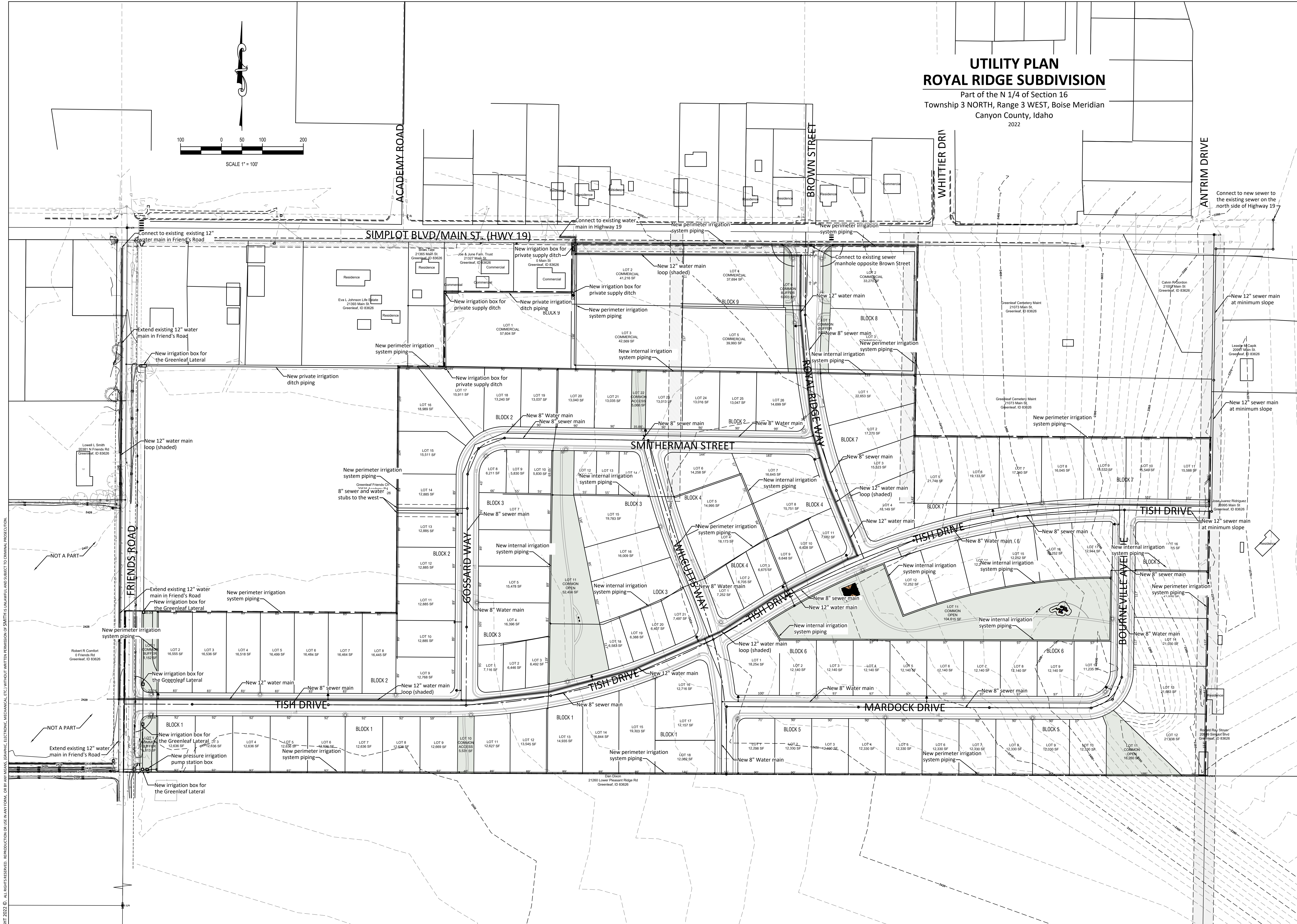


# UTILITY PLAN ROYAL RIDGE SUBDIVISION

Part of the N 1/4 of Section 16  
Township 3 NORTH, Range 3 WEST, Boise Meridian  
Canyon County, Idaho  
2022



Date  
April 4, 2023  
Project Number  
22009  
Drawn  
R J Smith  
Checked  
R J Smith, P.E.



## ROYAL RIDGE SUBDIVISION HWY 19 & FRIENDS ROAD, GREENLEAF, ID ROYAL PRO-C, LLC UTILITY PLAN



Sheet  
**3**

COPYRIGHT 2022 © ALL RIGHTS RESERVED. REPRODUCTION OR USE IN ANY FORM, OR BY ANY MEANS, GRAPHIC, ELECTRONIC, MECHANICAL, ETC. WITHOUT WRITTEN PERMISSION OF SMITH CONSULTING ENGINEERS IS UNLAWFUL AND SUBJECT TO CRIMINAL PROSECUTION.