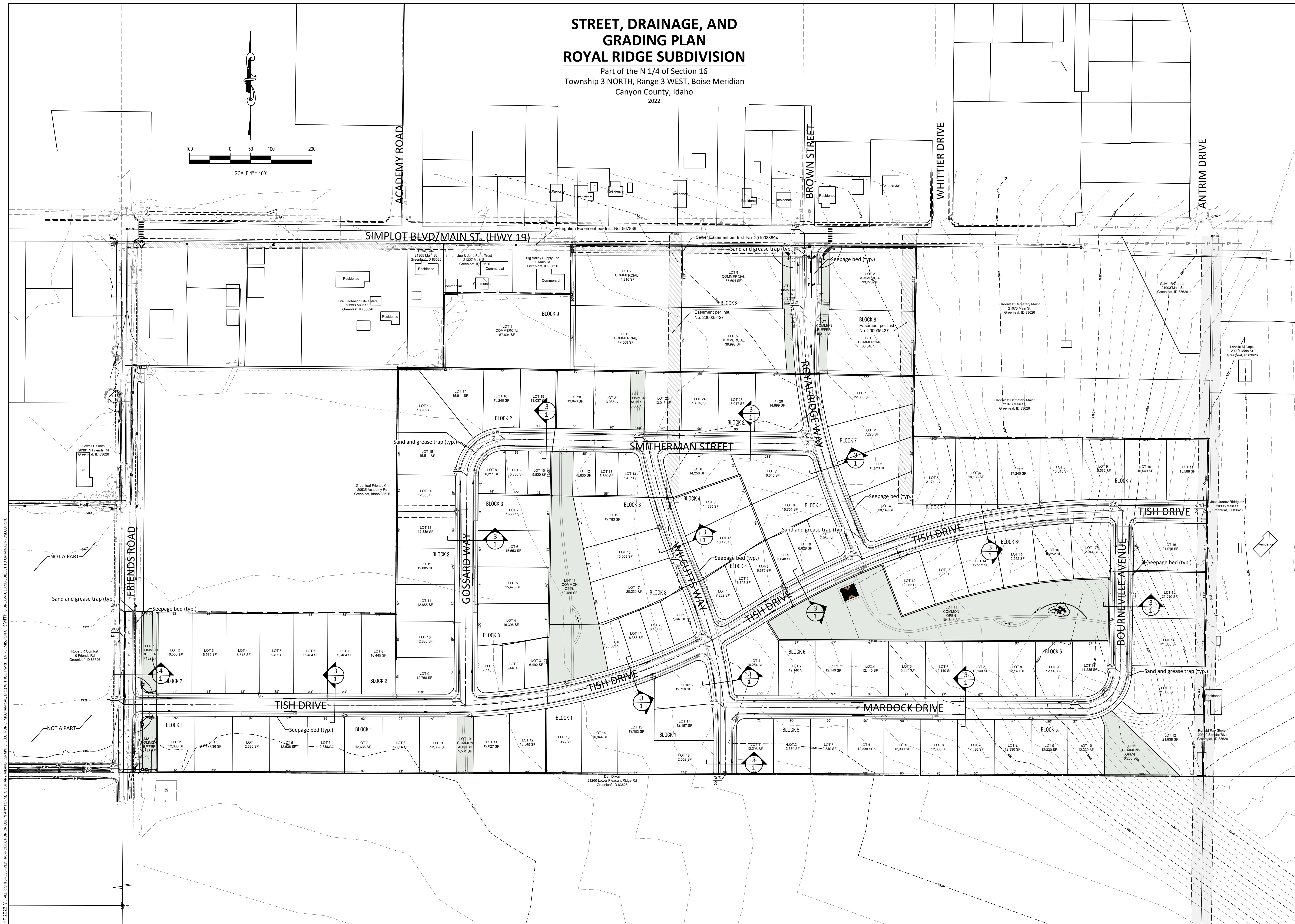
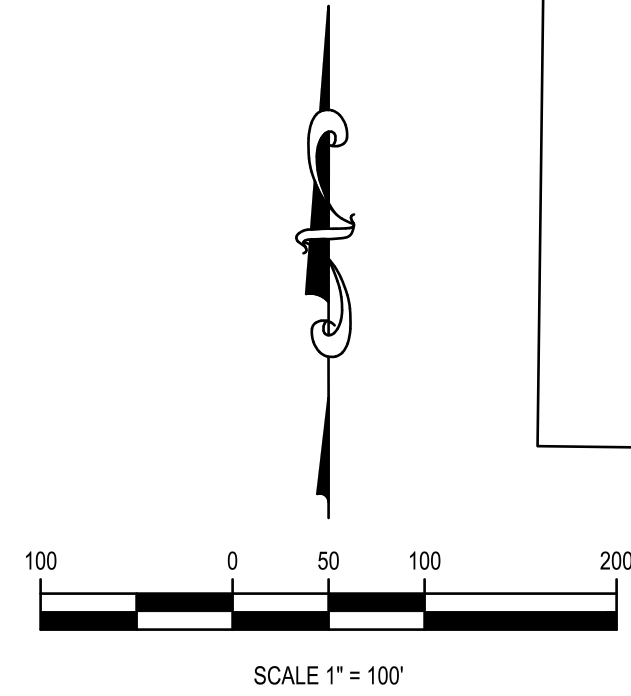


STREET, DRAINAGE, AND GRADING PLAN

ROYAL RIDGE SUBDIVISION

Part of the N 1/4 of Section 16
Township 3 NORTH, Range 3 WEST, Boise Meridian
Canyon County, Idaho
2022



REVISED

Date
April 4, 2023
Project Number
22009
Drawn
R J Smith
Checked
R J Smith, P.E.

**ROYAL RIDGE SUBDIVISION
HWY 19 & FRIENDS ROAD, GREENLEAF, ID
STREET, DRAINAGE, AND GRADING PLAN**



Sheet

2

COPYRIGHT 2022 ©. ALL RIGHTS RESERVED. REPRODUCTION OR USE IN ANY FORM, OR BY ANY MEANS, GRAPHIC, ELECTRONIC, MECHANICAL, ETC. WITHOUT WRITTEN PERMISSION OF SMITH ENGINEERING IS UNLAWFUL AND SUBJECT TO CRIMINAL PROSECUTION.